

Dr. G. W. Campbell) and the Greenshields Wing (in honour of David Greenshields) and the Operating Suite (the bequest of the late George Hamilton) were added to the hospital.

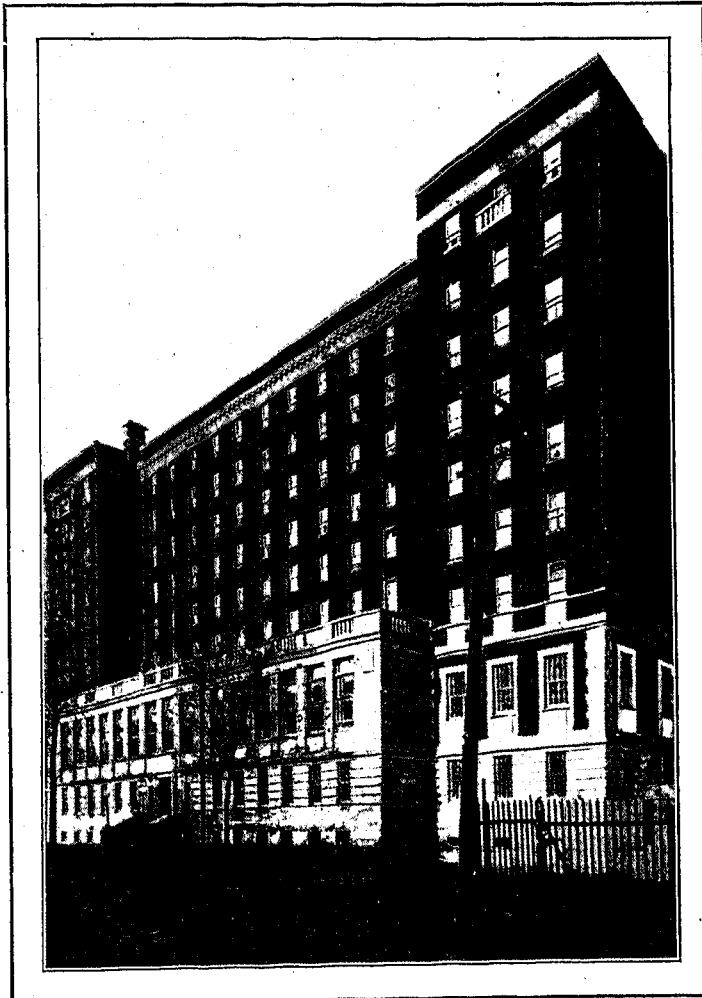
In 1897, the corner stone of a Nurses' Residence—known as the Jubilee Nursing Home—was laid by Lord Lister in the presence of a brilliant and distinguished assembly gathered in honour of this world-renowned scientist.

In 1909, the present Pathological Building was added, and in the same year the first Dental Clinic to be established in a General Hospital became part of the Institution with six dental chairs. This department has shown steady progress, possessing fifty dental chairs with a separate wing of its own, and is now the Dental Clinic of the Dental Faculty of McGill University.

In 1911, the corner stone of that imposing structure known as the New Building, was laid. His Excellency, the Governor-General, Earl Grey, graciously officiated at this notable function. The same year saw the establishment of the Social Service department. In 1924, thanks to the generosity of several members of the Board of Management, a Bio-Chemical Laboratory was opened at a cost of \$27,000.

In 1926, there was opened the splendid building of the New School and Residence for Nurses, with every accommodation for 210 nurses. The second floor is devoted solely to teaching purposes and contains class rooms, laboratories, demonstration rooms, etc.

And last, but not least, in the history of this old institution, there has been consummated within the last few weeks, after a careful study of the hospital situation in the City of Montreal, an



THE MONTREAL GENERAL HOSPITAL SCHOOL AND RESIDENCE FOR NURSES.



THE DIETETIC LABORATORY, MONTREAL GENERAL HOSPITAL.

agreement for five years, whereby the destinies of the Montreal General Hospital, now amalgamated with the Western Hospital and the Royal Victoria Hospital, now amalgamated with the Montreal Maternity Hospital, will be guided by a joint commission, composed of five members of the Board of Management of the Montreal General Hospital, five members of the Royal Victoria Hospital, and one representative from McGill University. While each hospital will retain its own autonomy, this commission will have power to decide on the erection of new buildings, raising of campaign funds and their distribution and correlation for teaching purposes, of medical appointments of the individual hospitals in connection with McGill University.

The kindly members and friends of the Ladies' Benevolent Society builded better than they knew when they gave a beginning to the magnificent institution known far and wide as the Montreal General Hospital, with its long and incomparable record of surgical, medical and dental efficiency,

We are indebted to Miss Mabel K. Holt, the Lady Superintendent and Principal of the School for Nurses at the Montreal General Hospital, for the foregoing information, which it gives us peculiar pleasure to publish, as over a quarter of a century ago we visited this fine hospital, when Miss Livingston, the first Lady Superintendent of its Nursing School, was in office.

We were particularly interested in the Dietary Department, which was very up to date in those days. Now there are two laboratories for the teaching of dietetic and other sciences, each providing equipment for twenty-four students.

[previous page](#)

[next page](#)